



Rushcutters Bay, NSW

20/1-7 QUEENS AVENUE

2
BED

2
BATH

1
CAR

**POCKLEY &
RODERICK**

INSPECT SATURDAY 10-10.30AM

Perfectly positioned on Level 3 overlooking lush tropical gardens, this tastefully renovated generous size apartment features two double bedrooms with spacious wardrobes, two bathrooms main with bath and separate shower, and luxurious NE-facing living-dining room opening to a wide balcony and park views. The excellent kitchen includes granite bench tops, dishwasher, double-oven plus microwave. Complete with internal laundry, lift, security single parking and sauna.

"Queensboro" apartments are situated adjacent to Rushcutters Bay harbourside parklands and tennis courts. Just a stroll to Potts Point, cafes and public transport. This is the perfect home for those seeking a peaceful private haven or executive rental in a prestige security building where you wake to birdsong.

LEASED

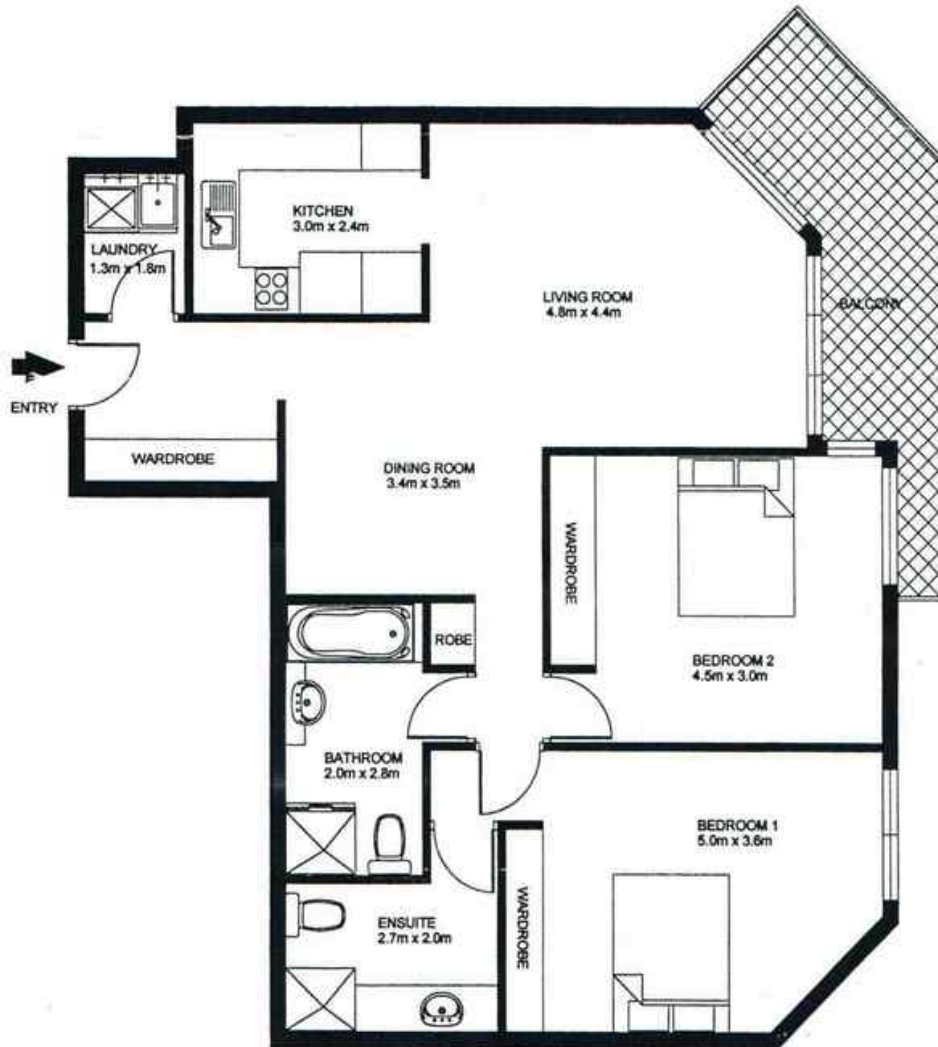
Contact: Tim Pockley
0402913225

Type: Apartment

Date Available: 21/05/2016

Bond: \$3560

<https://www.pockleyroderick.com.au>



**Unit 20
1 -7 Queens Avenue
Rushcutters Bay**

This plan is provided as a guide only. While we trust it to be correct, we cannot guarantee its accuracy. Sizes and areas indicated are approximate only.

Plans shown are only indicative of layout. Dimensions are approximate.

Rushcutters Bay, NSW
20/1-7 QUEENS AVENUE