



**Edgecliff, NSW**  
11/456 EDGECLIFF ROAD

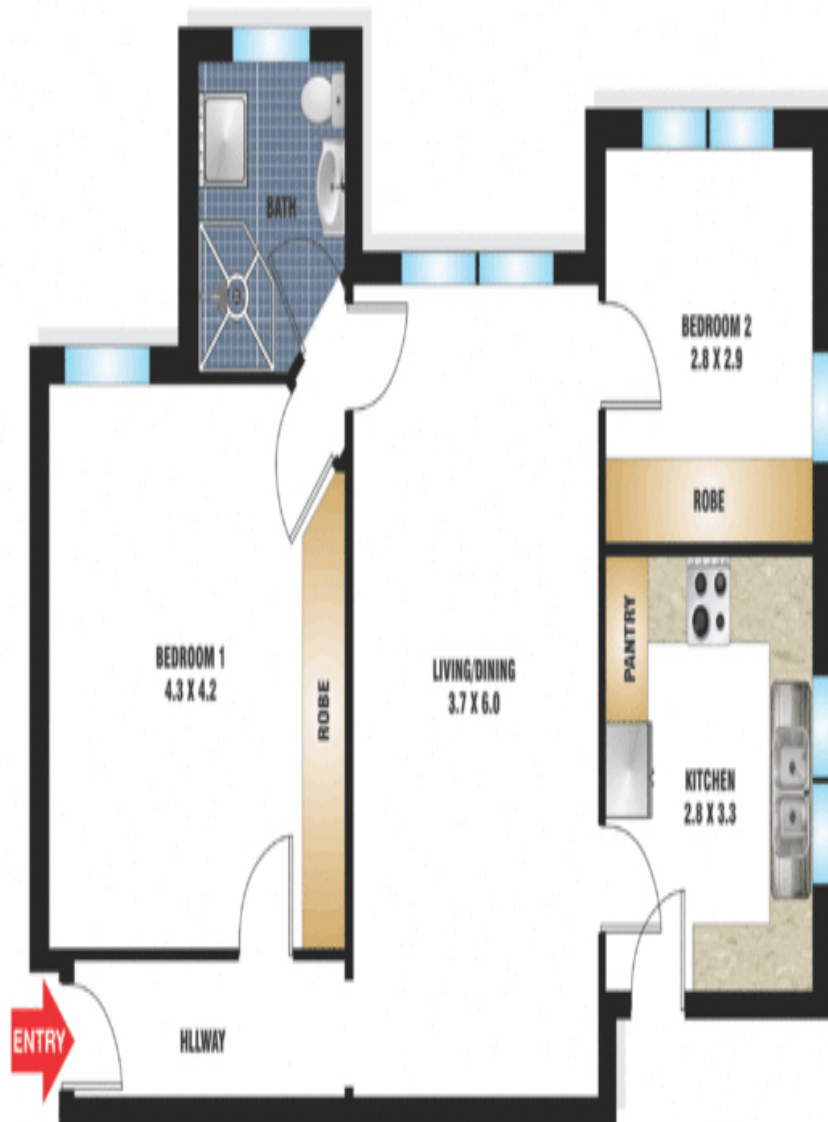
<b>2</b> BED	<b>1</b> BATH	<b>0</b> CAR
-----------------	------------------	-----------------



Boasting a top floor corner position in a boutique security block, this spacious Company Title (leasing permitted) Art Deco apartment is opposite the Edgecliff Centre. Its north-westerly aspect with leafy outlooks provides both light and privacy and it is positioned at the rear of Edgecliff Court in the grand 'Camberley' building. With original period features including high ceilings and tallow wood floors and contemporary comforts such as air conditioning, the addition of a few designer updates will further enhance its already significant appeal. Seconds from shopping and transport, it is also within minutes of lifestyle attractions at Double Bay including parks, the ferry stop and Edgecliff Centre.

- Living & dining with large picture window

**SOLD**  
**Council Rates:** \$339/qtr (approx)  
**Water Rates:** \$1,783/qtr (approx)  
**Contact:** Tim Pockley  
 0402913225  
**Type:** Apartment  
**Sold Date:** 07/03/2017  
<http://www.pockleyroderick.com.au>



11/456 Edgecliff Road  
EDGECLIFF

FLOOR PLAN BY BORTEX PTY LTD PH: 0414 922 670

**BRADFIELD CLEARY**

Georgia Cleary Licensed R/E Agent

**WARNING:** Any financial or investment advice provided by the Agent is of a general nature only, whose preparation does not take into account the individual circumstances, objectives, financial situation or needs of the person. You are advised to consult with your own independent financial and/or investment advisor.

**DISCLAIMER:** "The information contained herein has been provided by our Principal and third parties, which we merely pass on without any representation or warranty given, intended or implied by us as to its correctness and with no liability accepted by us in this regard. You must rely on your own inquiries as to its accuracy or otherwise."

**THINKING OF SELLING? - FOR A FREE APPRAISAL - CALL ME ON 0414 913 913**

Plans shown are only indicative of layout. Dimensions are approximate.

**Edgecliff, NSW**  
11/456 EDGECLIFF ROAD