



Woollahra, NSW
20 JOHN STREET

2
BED

1
BATH

0
CAR

**POCKLEY &
RODERICK**

SOLD

Council Rates: \$389/qtr (approx)

Contact: Tim Pockley
0402913225

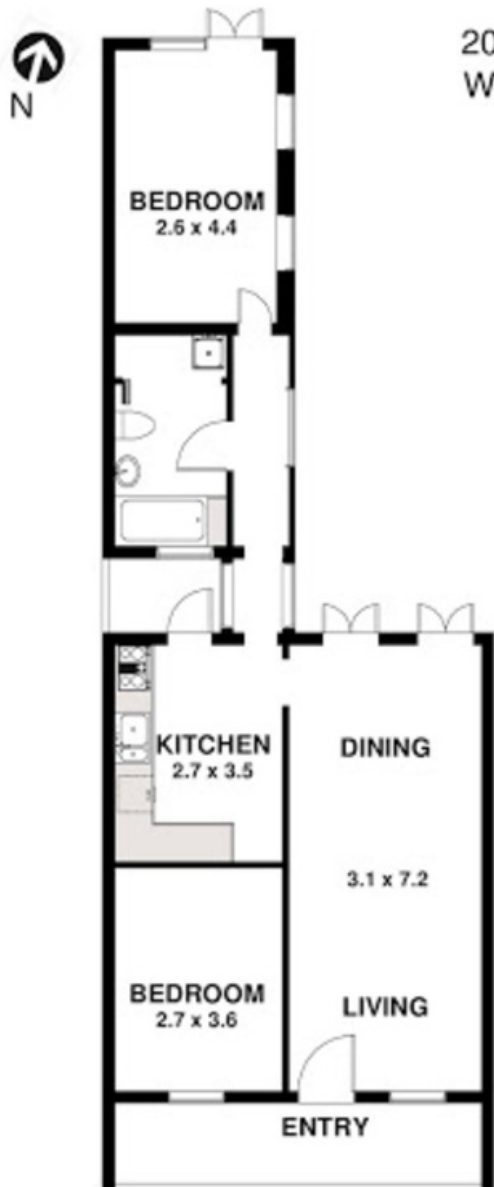
Type: House

Sold Date: 25/07/2015

Land: 155m²

Year Built: 1850

<http://www.pockleyroderick.com.au>



INTERNAL LAYOUT

20 John Street
WOOLLAHRA



SITE PLAN
(NOT TO SAME SCALE)

PLAN FOR PROMOTIONAL PURPOSES.
LAYOUT / DIMENSIONS ARE APPROX.
NO LIABILITY WILL BE ACCEPTED.

Plans shown are only indicative of layout. Dimensions are approximate.

Woollahra, NSW
20 JOHN STREET